

Building 4

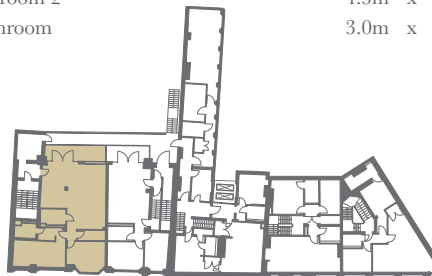
FIRST FLOOR



Apartment 3

2 Bedroom with Terrace

Gross Internal Area	108.4 sq m (1,167 sq ft)
Terrace Area	13 sq m (140 sq ft)
Kitchen/Living/Dining	7.6m x 7.5m
Master Bedroom	4.5m x 6.1m
En-suite	2.5m x 1.9m
Bedroom 2	4.5m x 2.7m
Bathroom	3.0m x 2.1m



Please be advised this development is a refurbishment and as such not all rooms are a regular shape. Floorplans and listed dimensions show approximate measurements only. Sizes and exact layouts in the brochure and floorplates and/or floorplans are illustrative and have been sized to fit this page. Please be advised there is construction tolerance of 10%. Every effort will be made to achieve the shown dimensions on the layout including balcony/terrace; however, dimensions may vary by +/- 10%. Furniture layouts are indicative only and kitchen layout is subject to change. The dimensions are not intended to be used for carpet sizes, appliances, or items of furniture. Apartment areas are provided as gross internal areas under the RICS measuring practice.